

METOS[®]
BY PESSL INSTRUMENTS



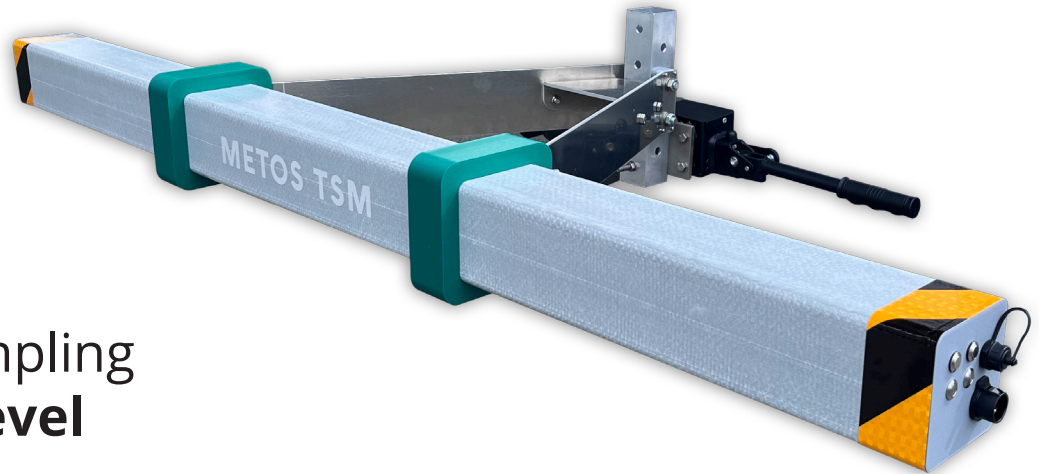
METOS TSM

Smart mapping for healthy soils and
efficient farming

KNOW YOUR FIELD

SUSTAINABLE SOIL MANAGEMENT.

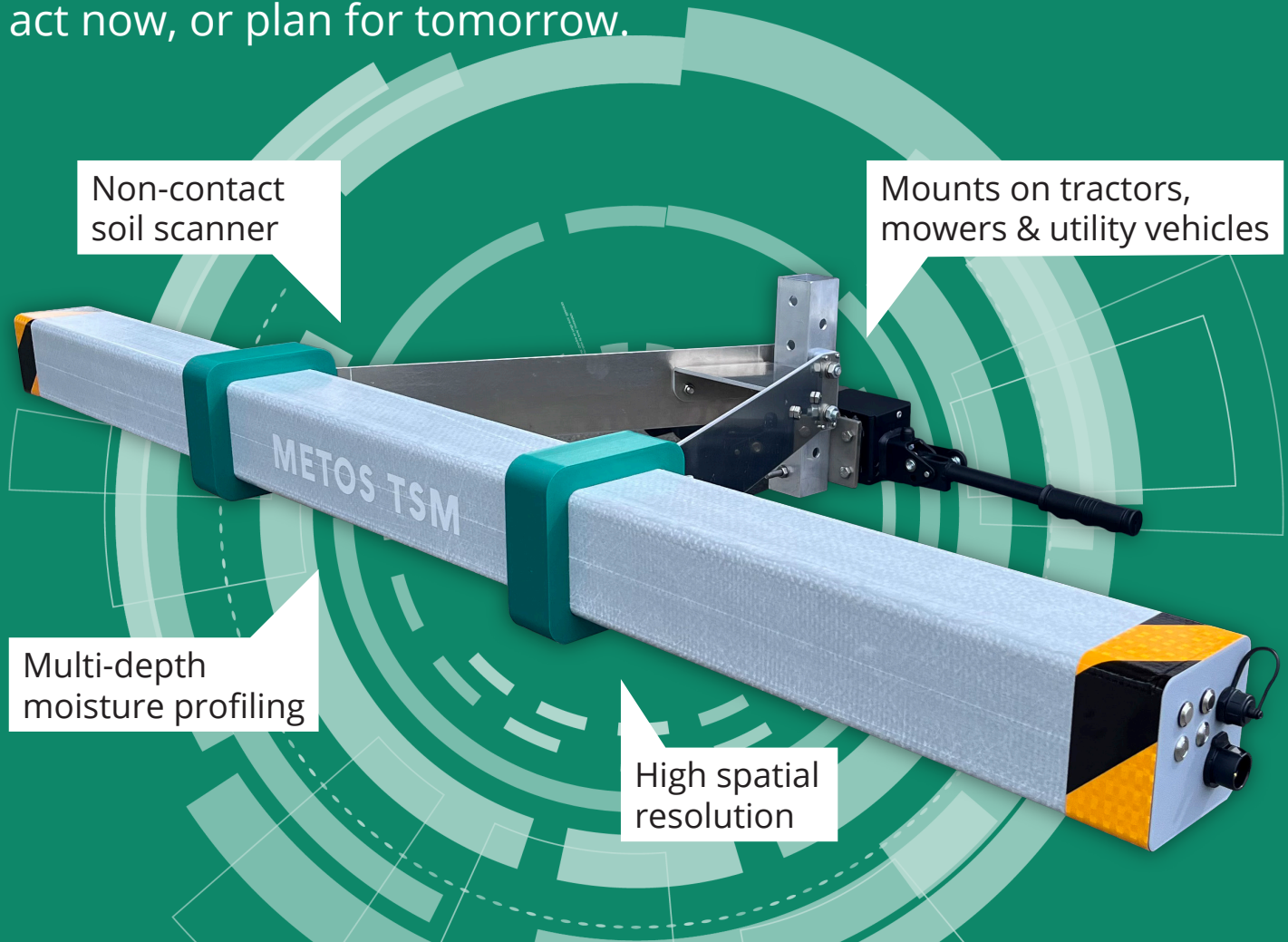
- ✓ Map soil moisture and conductivity **on-the-go**
- ✓ Map soil variability and compaction to **optimize field work**
- ✓ **Optimize irrigation strategies**
- ✓ Bring soil sampling to the **next level**
- ✓ **Increase efficiency** and reduce operational costs
- ✓ **Improve sustainability** and resource use



FIELD INSIGHTS IN REAL TIME

METOS TSM removes the guesswork from understanding your field. Instead of scattered single-point measurements, it delivers **complete spatial and depth data for every measured field.**

Attach it to your tractor or utility vehicle, drive across your field, and get near **real-time soil intelligence** that helps you act now, or plan for tomorrow.



SEE THE FIELD LIKE NEVER BEFORE

METOS TSM measures soil apparent conductivity in real time, enabling detection of variability of relative water content, compaction and soil management zones.

Bring your soil understanding to a new heights with this **fast, non-invasive method** that delivers data directly into your hands for instant decision-making.

Soil and irrigation management starts with knowing your terrain.



**WORK
AUTOMATION**



**SAVING
RESOURCES**



**INCREASING WORK
EFFICIENCY**



**OPTIMIZING
IRRIGATION**



**SAVING TIME
& MONEY**



**UNDERSTANDING
SOIL MOISTURE**

USE CASES



Soil Moisture & Irrigation Planning

Apply water where and when it's needed



Soil Variability & Compaction

Optimize your daily field operations



Soil Zoning & Management

Know your soil patterns, improve your yield



Work Efficiency & Sustainability

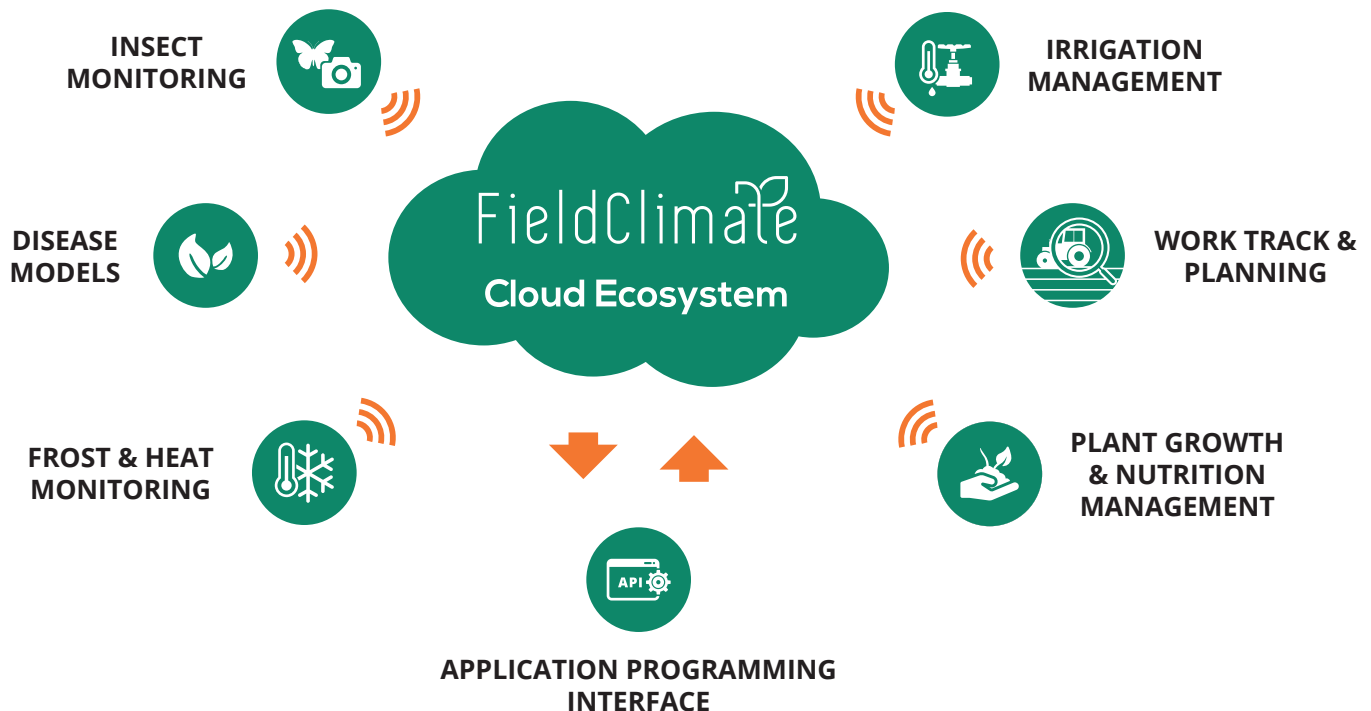
Less guesswork, more productivity

METOS TSM & FieldClimate

FieldClimate cloud ecosystem and its APIs is the most easy friendly and secure data hub for Top Soil Mapping

METOS TSM data are accessible via dedicated UI and API services fully integrated in FieldClimate, the powerful cloud platform developed by METOS by Pessl Instruments. With just a few clicks seamlessly process and unlock the full potential of your METOS TSM soil scans.

Designed for agronomists, service providers, and progressive farmers, it enables fast, reliable, and professional precision farming services.



KEY FEATURES

- ✓ Wireless data upload in close to real time
- ✓ Quick and secure transfer of sensor data to the cloud via WiFi, Bluetooth, or USB with fast post processing
- ✓ Pay as you go - automated field size calculation - no hidden fees with instant calculation of scanned fields
- ✓ Data processing & calibration
- ✓ Raw sensor values are processed, validated, and calibrated for maximum accuracy
- ✓ Smart API integration for precision farming applications (by API partners)
- ✓ Share data via shapefile-compatible API with 3rd-party platforms for:
 - › soil, zone, and topography maps
 - › variable rate seeding, fertilization & irrigation
 - › optimized soil sampling points for automatic soil sampling
 - › soil-yield correlation and economic return analysis
 - › high-resolution compaction zone maps to pinpoint problem areas and guide remediation
 - › base data for soil-yield analysis and ROI estimation

Unlock new value from the METOS TSM sensor data via FieldClimate cloud ecosystem which APIs provide seamless integration to farm management systems, driving decisions with precision and profit in mind.

METOS TSM

NEW 2025



EASY TO MOUNT



NEAR REAL-TIME SOIL INSIGHTS



HIGH-RESOLUTION MAPPING



SUSTAINABLE



**KNOW YOUR SOIL.
GROW SMARTER.**

Pessl Instruments GmbH

Werksweg 107, 8160 Weiz, Austria

 +43 (0) 3172 5521

 office@metos.at

www.metos.global